

# COVID-19 OUTPATIENT TREATMENT GUIDELINES ROADMAP

Last Updated: April 16, 2024

This resource is intended to serve as a guide on available outpatient COVID-19 treatment options, with links to FDA prescribing information, FDA Emergency Use Authorization and guideline recommendations from national guideline-developing organizations, where available. **It is not intended to endorse or otherwise promote a specific clinical recommendation or course of action.** Additionally, it does not include other forms of guidance that may be available for specific subsets of populations. Finally, the guidelines referenced here may not consider local allocation and availability of scarce resources. Additional information on where to access these therapeutics can be found at the National Infusion Center Association<sup>1</sup> and HHS.<sup>2</sup>

## Risk factors for severe COVID-19

Included here are some [medical conditions](#) that may place patients at a higher risk for progression to severe COVID-19:

- Age 65 years and older
- BMI of more than 25 kg/m<sup>2</sup>
- Pregnancy
- Chronic kidney disease
- Diabetes mellitus
- Immunosuppressing medications
- Cardiovascular disease or hypertension
- Chronic lung disease
- Sickle cell disease
- Neurodevelopmental disorders or conditions that confer medical complexity
- Medical technological dependence, e.g., tracheostomy

## When giving products under Emergency Use Authorization, providers must:

1. Give patient fact sheet for patients.
2. Inform patient of alternatives to treatment.
3. Inform patient that this is an unapproved drug.

## Does your patient have COVID?

Positive SARS-CoV-2 testing or consistent clinical syndrome

NO

Vaccination with updated formulations is recommended for all persons. For persons with moderate-to-severe immunocompromise, additional pre-exposure prophylaxis with monoclonal antibody may be considered.

YES

Is your patient hospitalized for COVID-19 or requiring increased O<sub>2</sub> for COVID-19?

YES

See IDSA<sup>3</sup> / AAP guidance.

NO

Does your patient have any symptoms?

NO

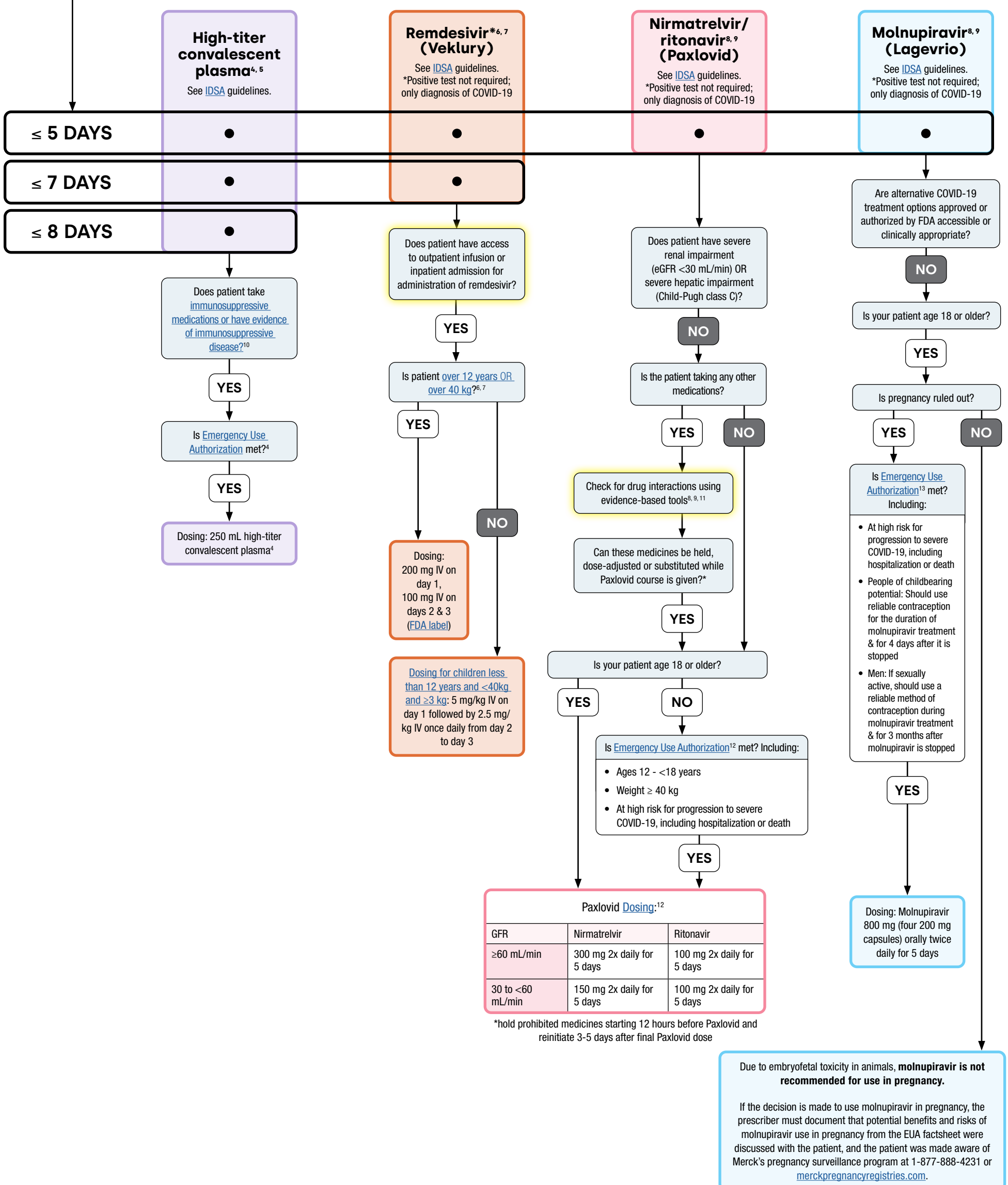
Outpatient treatment options not authorized or recommended. Supportive care only.

YES

How many days since symptom onset?

> 8 DAYS

This roadmap is not intended to represent a prioritization scheme for therapeutic choices. For information on prioritization of one outpatient treatment over another, see IDSA's guidelines on the therapeutic management of non-hospitalized adults with COVID-19 and ASPR Clinical Decision Aid.



## References

1. National Infusion Center Association Website.
2. HHS COVID-19 Therapeutics Locator ([arccgis.com](#))
3. IDSA Guidelines on the Treatment and Management of Patients with COVID-19 ([idsociety.org](#))
4. Convalescent Plasma EUA fact sheet and List of Tests and Cutoffs of High Titers ([table on page 9](#))
5. Randomized Controlled Trial of Early Outpatient COVID-19 Treatment with High-Titer Convalescent Plasma ([nih.gov](#))
6. Remdesivir (Veklury) Package Insert (Prescribing Information) with the extended approval for outpatient use ([gilead.com](#))
7. Remdesivir FDA approval
8. University of Liverpool COVID-19 Drug Interactions Page
9. NIH guidance on therapies for high-risk non-hospitalized patients
10. IDSA guidance on outpatient use of convalescent plasma in immunosuppressed patients
11. IDSA guidance on nirmatrelvir/ritonavir (Paxlovid) and molnupiravir
12. Paxlovid EUA Fact Sheet for Healthcare Providers
13. Molnupiravir EUA fact sheet ([fda.gov](#))